

metalcraft®  
VASES



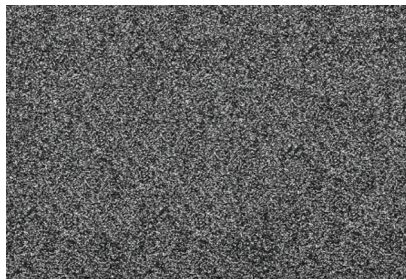


## Color Choices

MEMORIAL VASES



SILVER GRAY



DARK GRAY



BRONZE

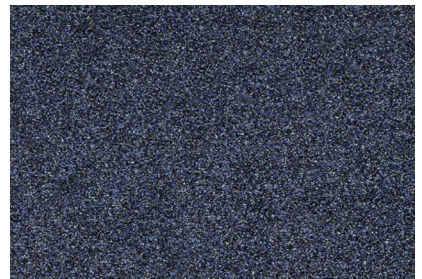
CREMATION URNS



MISSOURI PINK

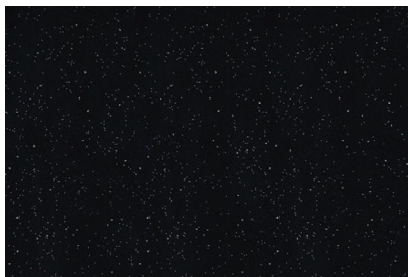


SUNSET ROSE

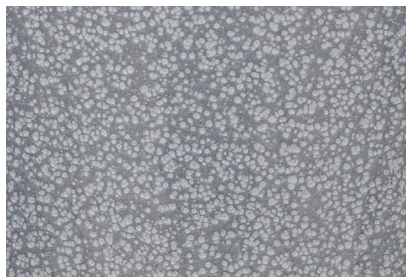


SAPPHIRE BLUE

ACCESSORIES



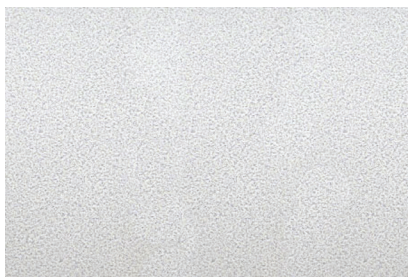
EBONY



METALCRAFT GRAY



RUBY



WHITE MARBLE



MAHOGANY

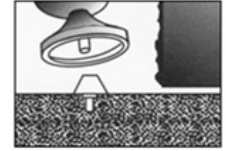


STATUARY

## FASTENER INSTALLATION METHODS

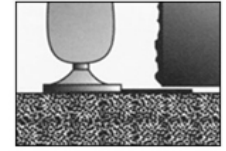
### LUG

A rosette with one 5/16" x 1-1/2" threaded lug is screwed and epoxied into a hole drilled in the memorial base. The vase is then screwed down onto the rosette. The vase can be removed by unscrewing it from the rosette, or securely attached by adding loctite to the threads before screwing the vase down.



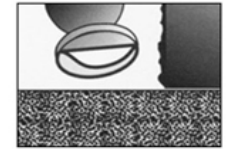
### STRAP

A heavy gauge stainless steel strap bolts to the bottom of the vase and inserts between the die and the base of the monument. The vase cannot be removed without moving the die. A perfect solution.



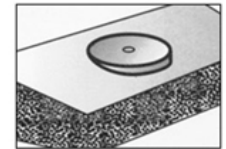
### TAPE

Double sided tape is used between the vase and the memorial. The tape requires a polished surface on the granite and the high-strength tape requires 100 lbs. of force to break the seal. Weatherproof, easy to mount, and permanent.



### BEVEL MARKER WEDGE

Heavy die-cast aluminum color matched wedges allow the mounting of vases on 1-1/2" bevel markers. Wedges are matched to fit most of our vases using either the double-sided tape, or a lug. The bevel marker wedge is permanent, easy to mount, and eliminates ground obstruction around the marker.



### COR-LOC® (See below for installation)

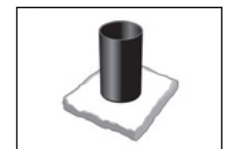
Is a simple solution to mounting a lawn/flush ground unit assembly to a granite marker. From underneath, the Cor-Loc® slides over the PVC canister and into the core hole of the marker, filling the gap between the PVC canister and granite. When wedged in, the Cor-Loc® acts as a compression fitting, securely fastening the ground unit to the granite marker. Quick, easy, and no messy epoxies.



## COR-LOC® INSTALLATION METHOD

### STEP 1

Disconnect and remove the vase from the in-ground unit before installation. Position in-ground unit in core hole.



### STEP 2

Place a piece of cardboard or carpet underneath to protect the face of the marker. Slide the Cor-Loc® over the in-ground unit PVC canister and into the core hole.



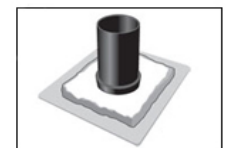
### STEP 3

With a hammer, drive the Cor-Loc® securely into the gap between the PVC canister and granite. Alternate strikes to keep the Cor-Loc® level. Continue to drive the Cor-Loc® in as far as possible.



### STEP 4

Approximately 1" of the Cor-Loc® unit will be showing. Place the marker into position and reconnect the vase to the chain. Installation is now complete.







**MEDALLION** **U**

Vase Size: 9 5/8" x 3 1/2"

Liner: 6 1/2" x 2 7/8"

Hug-Stem®: Included



**Antiqued Brass Emblems**

Ten antiqued brass emblems to choose from  
(see page 40 for all choices)

MEDALLION





REGAL



**REGAL** **U** **G**

Vase Size: 10" x 3 7/8"

Liner: 7" x 3"

Hug-Stem®: Included

6" Core Hole

Ring Diameter: 7 1/2"

Canister Dimensions: 12" x 5 3/4"

**REGAL-CROSS** **U** **G**

Vase Size: 10" x 3 7/8"

Liner: 7" x 3"

Hug-Stem®: Included

6" Core Hole

Ring Diameter: 7 1/2"

Canister Dimensions: 12" x 5 3/4"



REGAL-CROSS



**GEM** **U** **G**

Vase Size: 9 5/8" x 3 7/8"

Liner: 7" x 3"

Hug-Stem®: Included

6" Core Hole

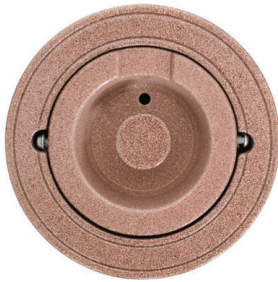
Ring Diameter: 7 1/2"

Canister Dimensions: 12" x 5 3/4"

GEM



CREST



**CREST** **U** **G**

Vase Size: 9 5/8" x 3 7/8"

Liner: 7" x 3"

Hug-Stem®: Included

6" Core Hole

Ring Diameter: 7 1/2"

Canister Dimensions: 12" x 5 3/4"





CROWN

**CROWN** **U** **G**

Vase Size: 11 1/4" x 4 7/8"

Liner: 7" x 3"

Hug-Stem®: Included

6" Core Hole

Ring Diameter: 7 1/2"

Canister Dimensions: 12" x 5 3/4"



**TIARA** **U** **G**

Vase Size: 9 7/8" x 3 1/8"

Liner: 6 3/4" x 2"

Hug-Stem®: Included

5" Core Hole

Ring Diameter: 5 5/8"

Canister Dimensions: 10 3/4" x 4 3/4"



TIARA



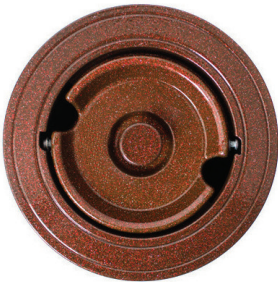
CLASSIC **U** **G**

Vase Size: 11 1/4" x 4 7/8"  
Liner: 7" x 3"  
Hug-Stem®: Included  
  
6" Core Hole  
Ring Diameter: 7 1/2"  
Canister Dimensions: 12" x 5 3/4"

CLASSIC



4 X10 PARAGON



4 X 10 PARAGON **U** **G**

Vase Size: 4" x 10"  
Liner: 7" x 3"  
Hug-Stem®: Included  
  
6" Core Hole  
Ring Diameter: 7 1/2"  
Canister Dimensions: 12" x 5 3/4"





MOM



DAD



CROSS



PRAYING HANDS LEFT



PRAYING HANDS RIGHT



MARINE



AIR FORCE



ARMY



NAVY



COAST GUARD



Patrician



Signature®



Garden



# Granite Vases



**TAPERED VASES**



**ROUND TURNED VASES**